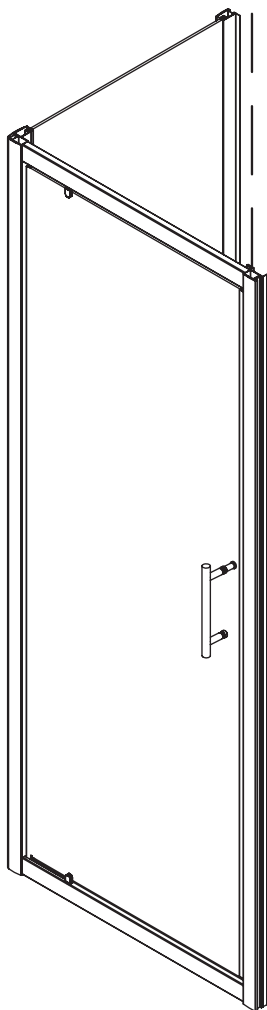


VOXORT

INSTALLATION MANUAL



HR Upute za postavljanje BLUE okretnih tuš vrata

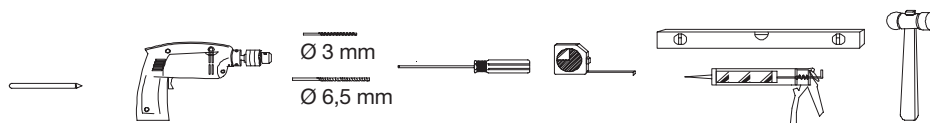
VOXORT

and water is so amazing

Before final assembly please note and check that final installation measure don't suit measure in name. Absolute sealing for all doors, side panels and shower enclosure is not possible. High water resistance.

Before Installation

- ❶ Check the contents of the pack carefully before installation. The manufacturer will not be held responsible for any de-fit/re-fit costs where faulty product has been fitted.
- ❷ Handle glass with care. Although the glass supplied is toughened safety glass (to EN12150), impacts can damage both the glass and the frame.
- ❸ Make sure there are no pipes or cables hidden in the wall where you intend to drill.
- ❹ Tools: Power Drill; 6,5 and 3 diameter Drill Bits; Philips screwdriver; Plain screwdriver; Spirit Level; Pencil; Plastic hammer; Tape measure; Silicone spray; Line hammer; Monkey wrench



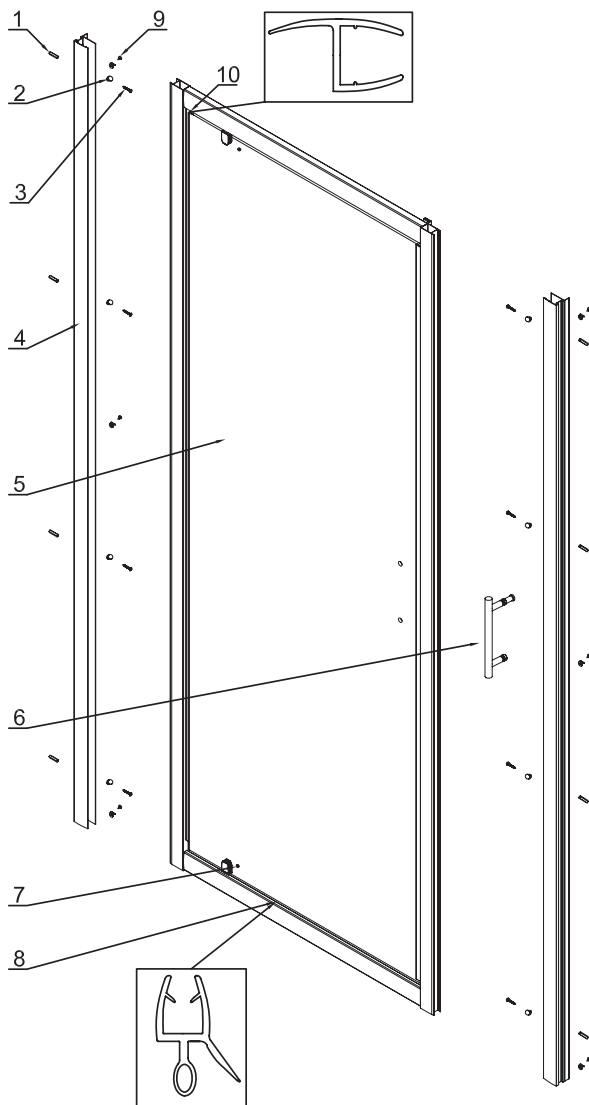
- ❺ Ensure that the shower tray has been installed as per the manufacturers instructions. The tray should be leveled, and the walls tiled down to the tray. The horizontal edge between the tiles and the tray must be sealed with silicone sealant, to ensure water-tightness.
- ❻ For your own safety, this product is a 2 person installation, one to stabilise the external side of the product and the other to secure/fit from the inside.

Contents

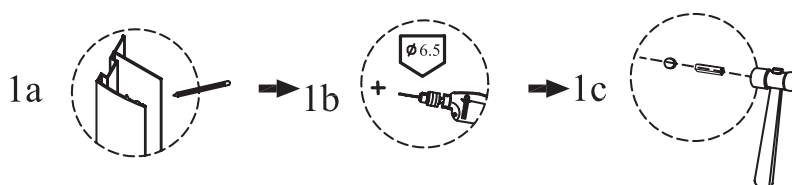
- | | | | |
|---|----------------------|----|--------------------------|
| 1 | 8 wall plugs | 7 | 2 plugs |
| 2 | 14 capped washers | 8 | 1 door bottom water seal |
| 3 | 8 ST4x30 flat screws | 9 | 6 M4x10 flat screws |
| 4 | 2 wall profiles | 10 | 1 water seal |
| 5 | 1 door | | |
| 6 | 1 piece of handle | | |

VOXORT

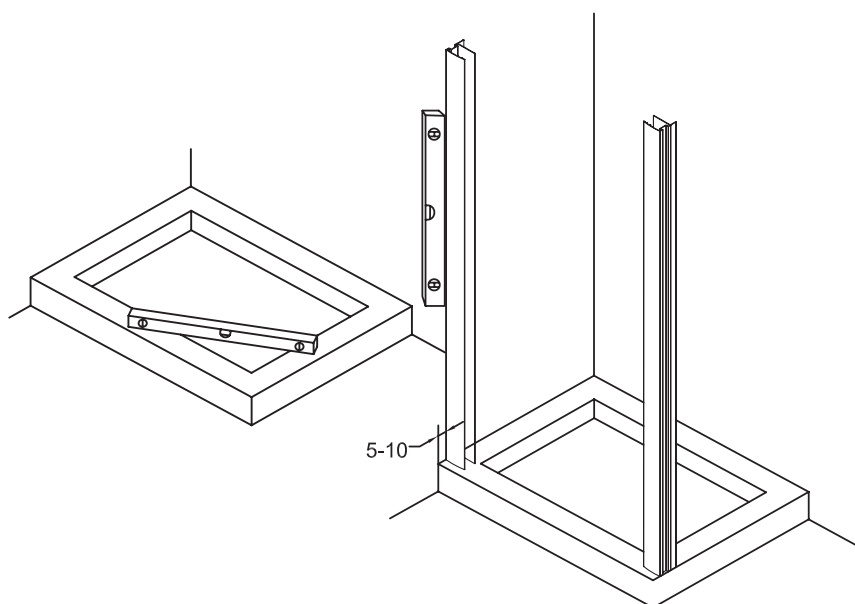
and water is so amazing



Installation



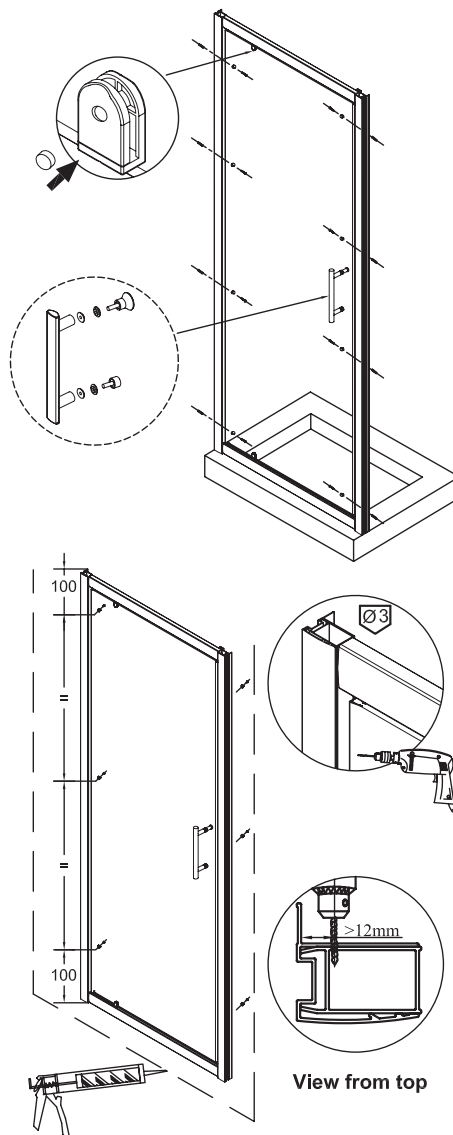
- 1 Place the wall channels against the wall as shown in the diagram on the right. Making sure the profiles are vertical using a spirit level, mark the holes to be drilled through the profiles onto the wall. Remove the profiles and drill 6,5mm holes into the wall at the 4 points you have marked on each wall. Insert wall plugs into the drilled holes.



VOXORT

and water is so amazing

- 2 Push wall profile (4) to the pre-assembled frame. Fix the wall profile to wall using screws (3). Cover the screws with capped washers (2).
- 3 Fix the handle to the door. Fit screw cap to the pivot screw.
- 4 Drill a 3mm hole at the top, middle and bottom of each wall channel into the connection profile carefully observing the dimensions given. Screw 3xM4x10 screws in place and cover with caps provided. Repeat procedure for the other wall profile.
- 5 Apply silicone sealant on all external vertical and horizontal profiles that meet the wall and the tray on the outside only. You must not use the shower for 24 hours after the application of sealant.

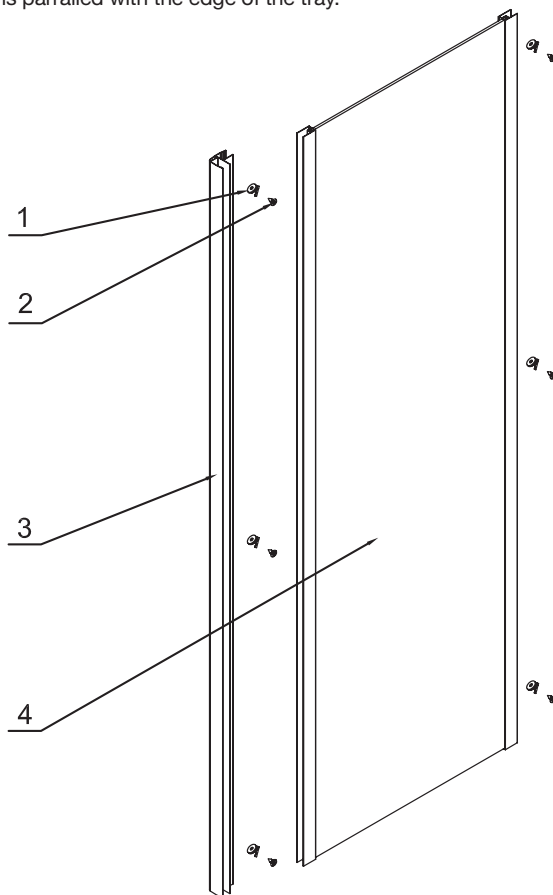


Assembly and fixing of side panel (purchased separately)

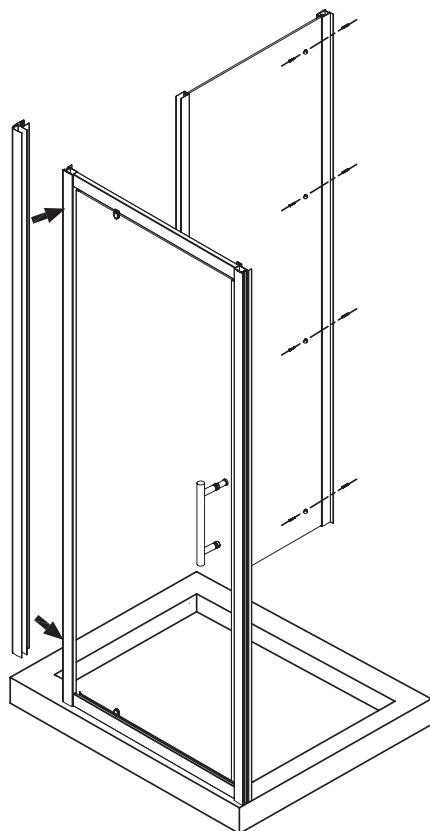
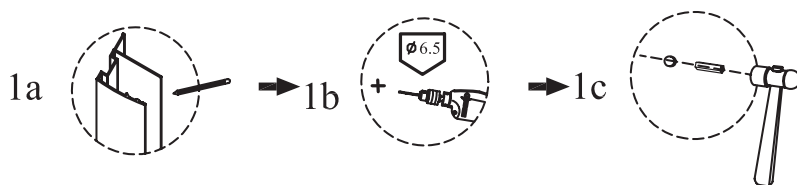
When fitting a pivot door and side panel, loosely assemble the unit and lift onto the shower tray ensuring the enclosure edge runs parallel with the edge of the tray.

Contents

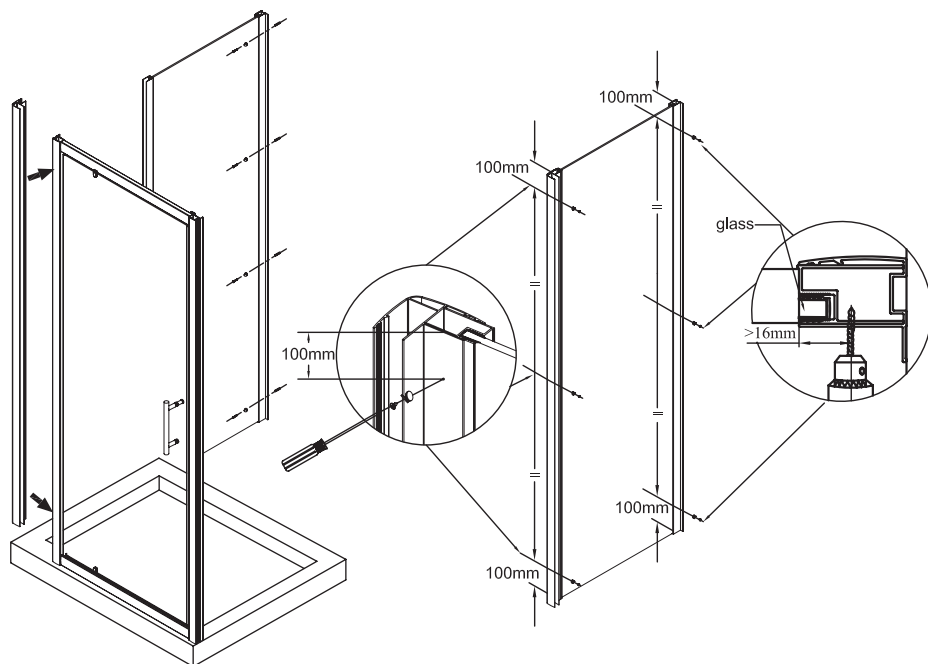
- 1 6 capped washers
- 2 6 M4x10 flat screws
- 3 1 corner post
- 4 1 flat side panel



Installation

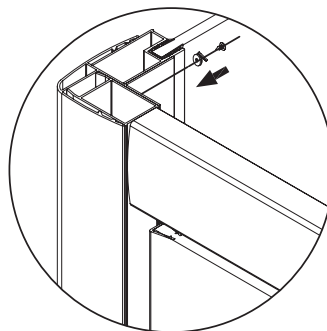


- 1 Mark holes position on wall through holes on wall profile. Drill holes and put in wall plugs.



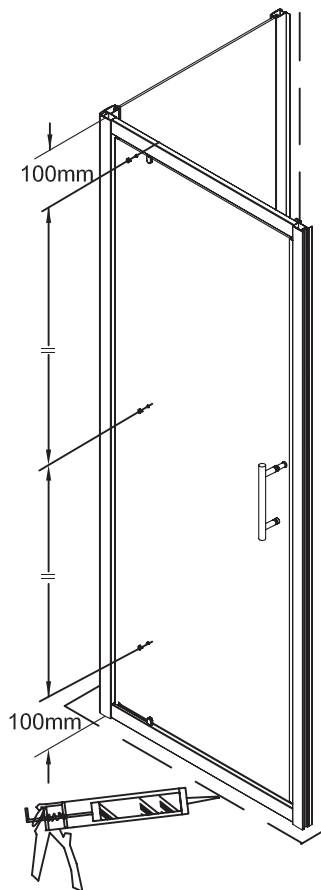
Plastic Covers
Flat Screws M4*10

- 2 Fix wall profiles to wall. Make sure the wall profile is vertical. Then push the side panel to wall profile and corner post. Cover wall profile screws using screw caps (1).
- 3 Drill a 3mm hole at the top middle and bottom of each wall channel into the connection profile carefully observing the dimensions given. Screw 3xM4x10 screws in place and cover with caps provided. Repeat procedure for the other wall profile.



VOXORT

and water is so amazing



- 4 Apply silicone sealant on all external vertical and horizontal profiles that meet the wall and the tray on the outside only. You must not use the shower for 24 hours after the application of sealant.



Cleaning and maintenance

Maintain and clean your cabin regularly to prevent limescale and closing problems. Clean the shower enclosure with a soft cloth and a mild detergent. Do not clean the cabin with aggressive agents such as alcohol, petrol or other chemicals. If the doors are creaking after the cabin is installed, you can put lubricant on the wheel roller, profile.



**UPUTE ZA POSTAVLJANJE
BLUE OKRETNIH
TUŠ VRATA**

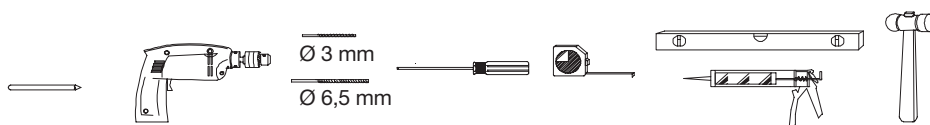


**Prije ugradnje provjerite ugradne mjere
budući da se one uvijek razlikuju od
nazivnih. Apsolutno brtvljenje tuš kabina
i/ili vrata/stranica nije moguće.**

Velika vodonepropusnost.

Prije postavljanja:

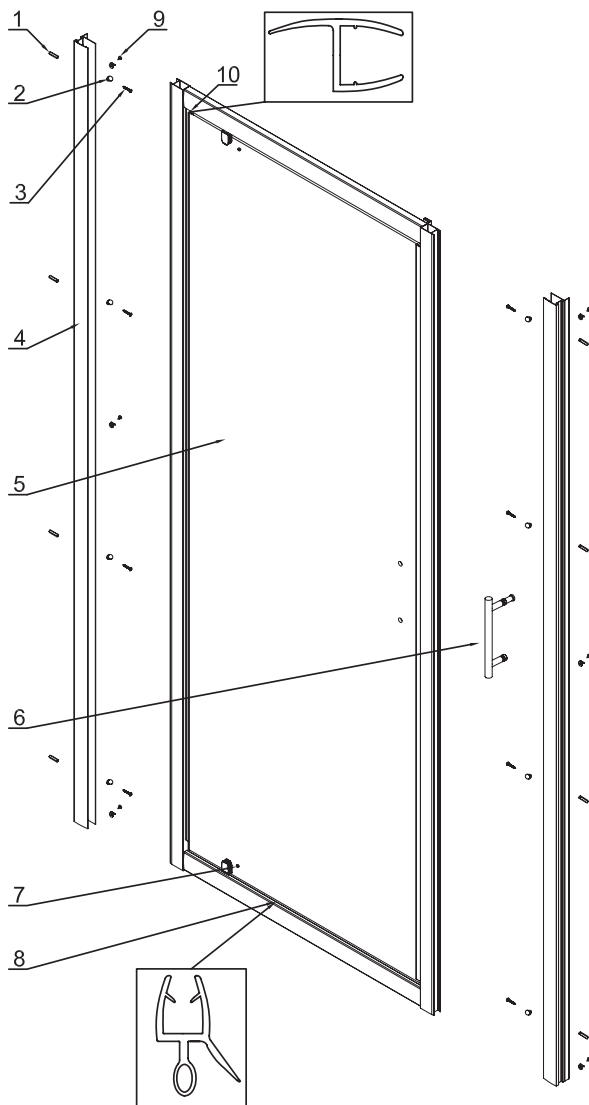
- 1 Provjerite sadržaj pakiranja prije montaže. Proizvođač/prodavač neće biti odgovoran za bilo koji višak ili manjak dijelova koji su utvrđeni naknadno.
- 2 Postupajte oprezno sa staklom. Iako je isporučeno staklo sigurnosno prema standardu EN 12150, nestručno rukovanje može oštetiti i staklo i okvir.
- 3 Budite sigurni da u zidu gdje ćete bušiti nema cijevi i kablova.
- 4 Potreban alat: električna bušilica; svrdla promjera 6.5 i 3; križni odvijač; obični odvijač; libela; olovka; plastični čekić; mjerna traka; silikonski sprej, precizni čekić, francuski ključ



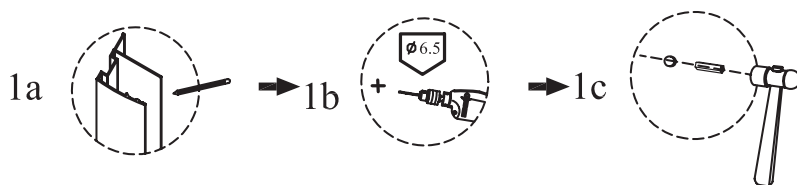
- 5 Osigurajte da je tuš kada postavljena prema uputama proizvođača. Kada mora biti postavljena u vagu i zidne pločice do kade. Horizontalni rub između pločica i kade posilikoniran kako bi osigurali nepropusnost.
- 6 Radi vaše sigurnosti i pravilnog postavljanja za montažu su potrebne dvije osobe. Jedna osoba treba pridržavati unutarnju stranu proizvoda, a druga postaviti i osigurati iznutra.

Sadržaj

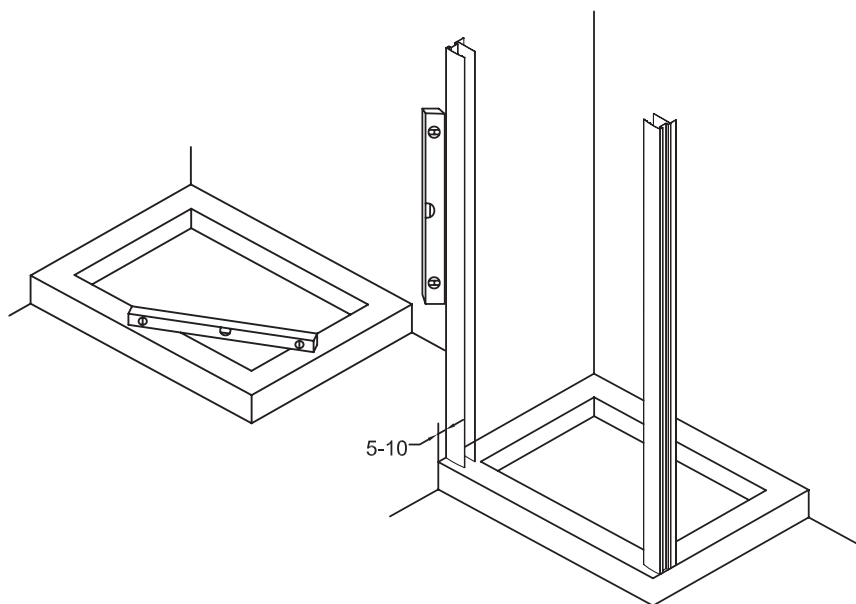
- | | | | |
|---|------------------------|----|---------------------------------|
| 1 | 8 tipli | 6 | 1 drška |
| 2 | 14 kapica | 7 | 2 čepa |
| 3 | 8 ST4x30 ravnih vijaka | 8 | 1 vodonepropusna brtva za vrata |
| 4 | 2 zidna profila | 9 | 6 M4x10 ravnih vijaka |
| 5 | 1 vrata | 10 | 1 brtva |



Instalacija



- ❶ Namjestite zidni profil na zid kako je pokazano na slici. Budite sigurni da je profil ravno postavljen koristeći libelu, označite rupe koje će biti probušene kroz profil u zid. Nakon što ste označili rupe uklonite profil i izbušite rupe 6,5mm u zid na 4 mjesta. Namjestite profil na izbušene rupe.

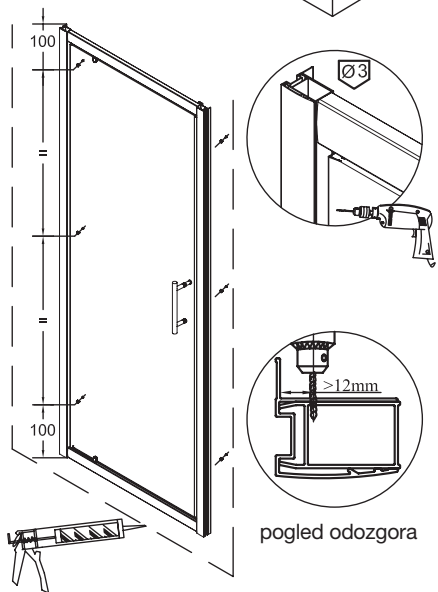
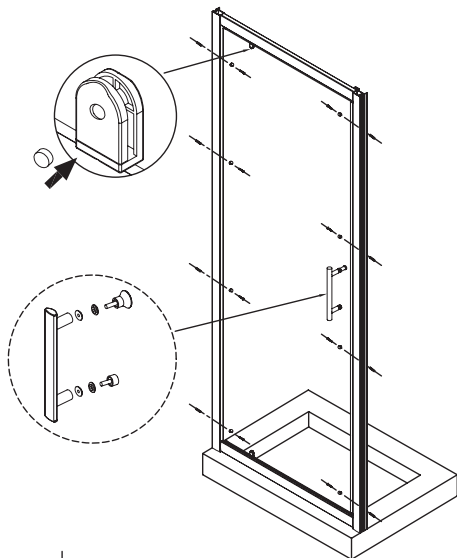


2 Fiksirajte zidni profil i učvrstite ga koristeći vijke. Nakon toga vijke prekrijte sa ukrasnim kapicama.

3 Učvrstite ručku na vrata. Zavrnite kapicu na vijak.

4 Probušite 3mm rupu na vrhu, sredini i dnu svakog zidnog kanala uzimajući u obzir date dimenzije. Učvrstite sa 3xM4x10 i postavite ukrasne kapice. Ponovite proceduru i na drugom zidnom profilu.

5 Posilikonirajte zidni profil s unutarnje i vanjske strane kako bi spriječili prolaz vode. Nakon što ste postavili silikon, morate ostaviti suho 24 sata.

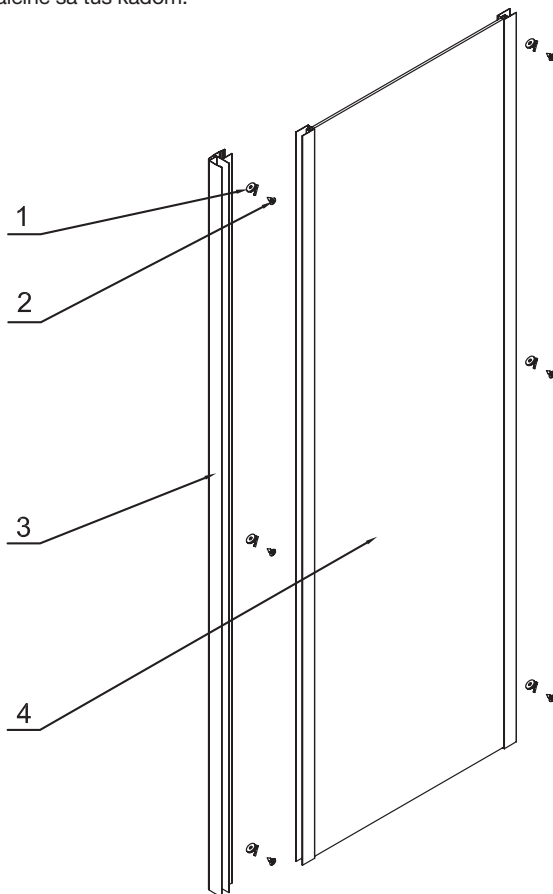


Upute za montažu bočne stranice (kupljeno posebno)

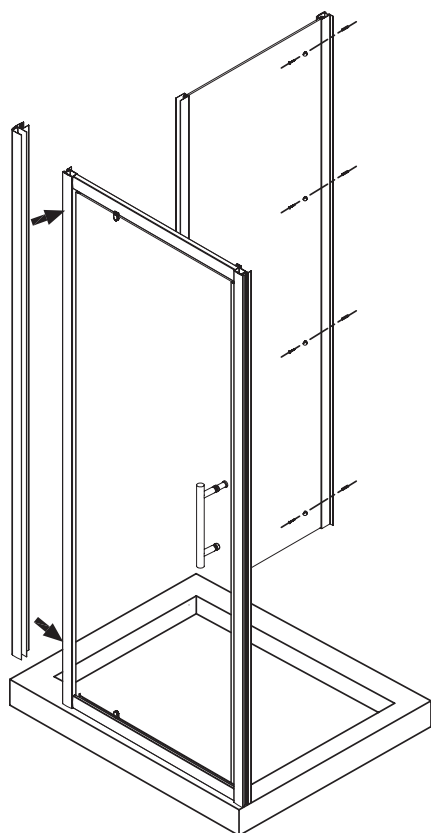
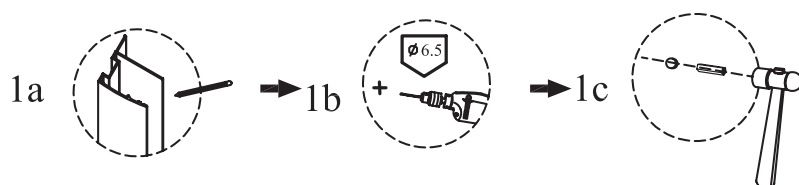
Kada montirate tuš vrata i bočnu stranicu, labavo sastavite i postavite tuš kadu pazeći da rub vrata i bočne stranice budu paralelne sa tuš kadom.

Sadržaj

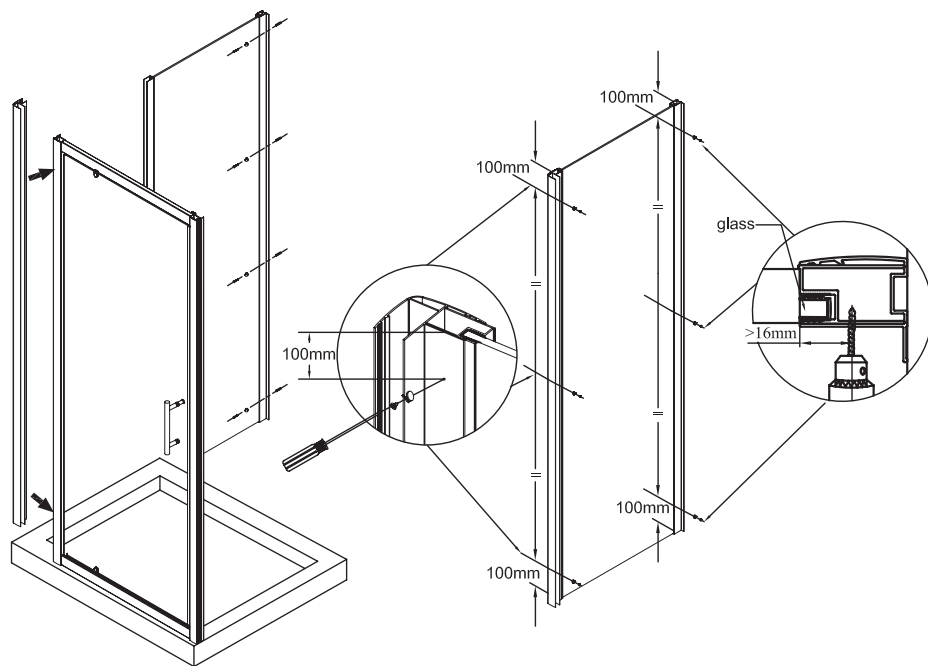
- 1 6 kapica
- 2 6 M4x10 ravnih vijaka
- 3 1 kutnik
- 4 1 ravna ploha



Instalacija

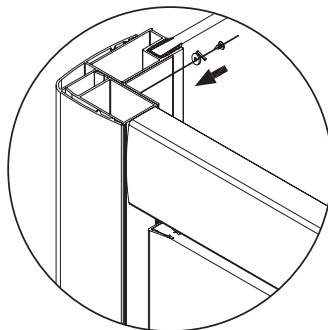


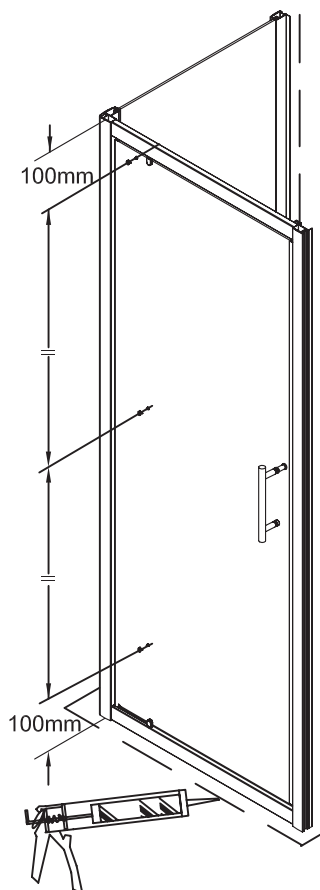
- 1 Označite poziciju rupa na zidu kroz rupe na profilu. Probušite rupe u zidu i postavite tiple.



plastika prekriva
ravne vijke M4x10

- 2 Postavite zidni profil na zid. Budite sigurni da je zidni profil postavljen vertikalno. Tada postavite bočnu stranicu na zidni profil i K profil. Prekrijte vijke ukrasnim kavicama.
- 3 Probušite 3mm rupu na vrhu, sredini i dnu svakog zidnog kanala uzimajući u obzir date dimenzije. Učvrstite sa 3xM4x10 i postavite ukrasne kavicice. Ponovite proceduru i na drugom profilu.





- ④ Silikonirajte samo sa vanjske strane sve okomite i vodoravne profile na spojevima sa zidom i tuš kadom. Ostavite silikon da se suši barem 24 sata.

Čišćenje i održavanje

Održavajte i čistite svoju kabinu redovito kako bi spriječili nastanak kamenca i problema prilikom zatvaranja. Čišćenje tuš kabine vršite s mekom krpom i blagim deterdžentom. Kabinu ne čistite agresivnim sredstvima kao što su alkohol, benzin ili ostala kemijska sredstva. Nakon što je kabina postavljena ukoliko prilikom otvaranja/zatvaranja vrata škripe možete staviti sredstvo za podmazivanje na valjak kotača, profil.