

## Logis

### Single lever shower mixer for exposed installation

Finish: **Chrome** Article Number: **71600000**



#### Description

##### product features

- 1 function
- centre distance:  $150 \pm 12$  mm
- maximum flow rate at 3 bar: 28 l/min
- flow rate of hand shower at 3 bar: 17 l/min
- ceramic cartridge
- temperature limitation adjustable
- non-return valve
- with silencer
- hose connection DN15
- connection dimension: DN15
- connection type: s-shaped connections
- PA-IX 28114/IB
- DVGW NW-6506CP0553
- ACS 21 ACC LY 858 France, valide jusqu'au 05.05.2026
- WRAS 2307026
- WRAS 2307026 - Approval letter 2307026
- Kiwa K6161\_Mechanical Mixers EN817
- SVGW 1409-6309
- Belg 19183271

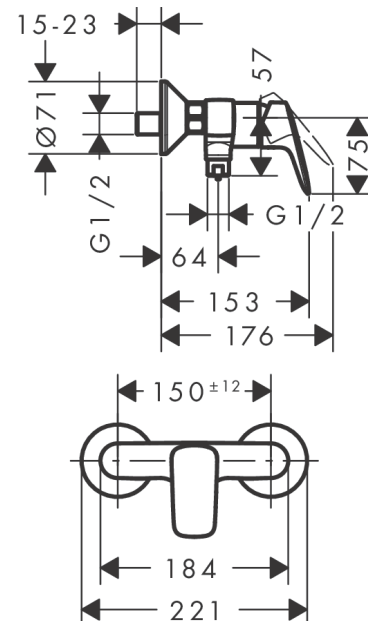
#### Certificates / Sustainability



#### Product image



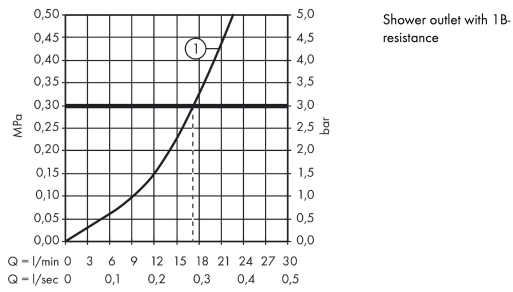
#### Scale drawing



**Logis**  
**Single lever shower mixer for exposed installation**  
 Finish: **Chrome** Article Number: **71600000**



**Flowchart**

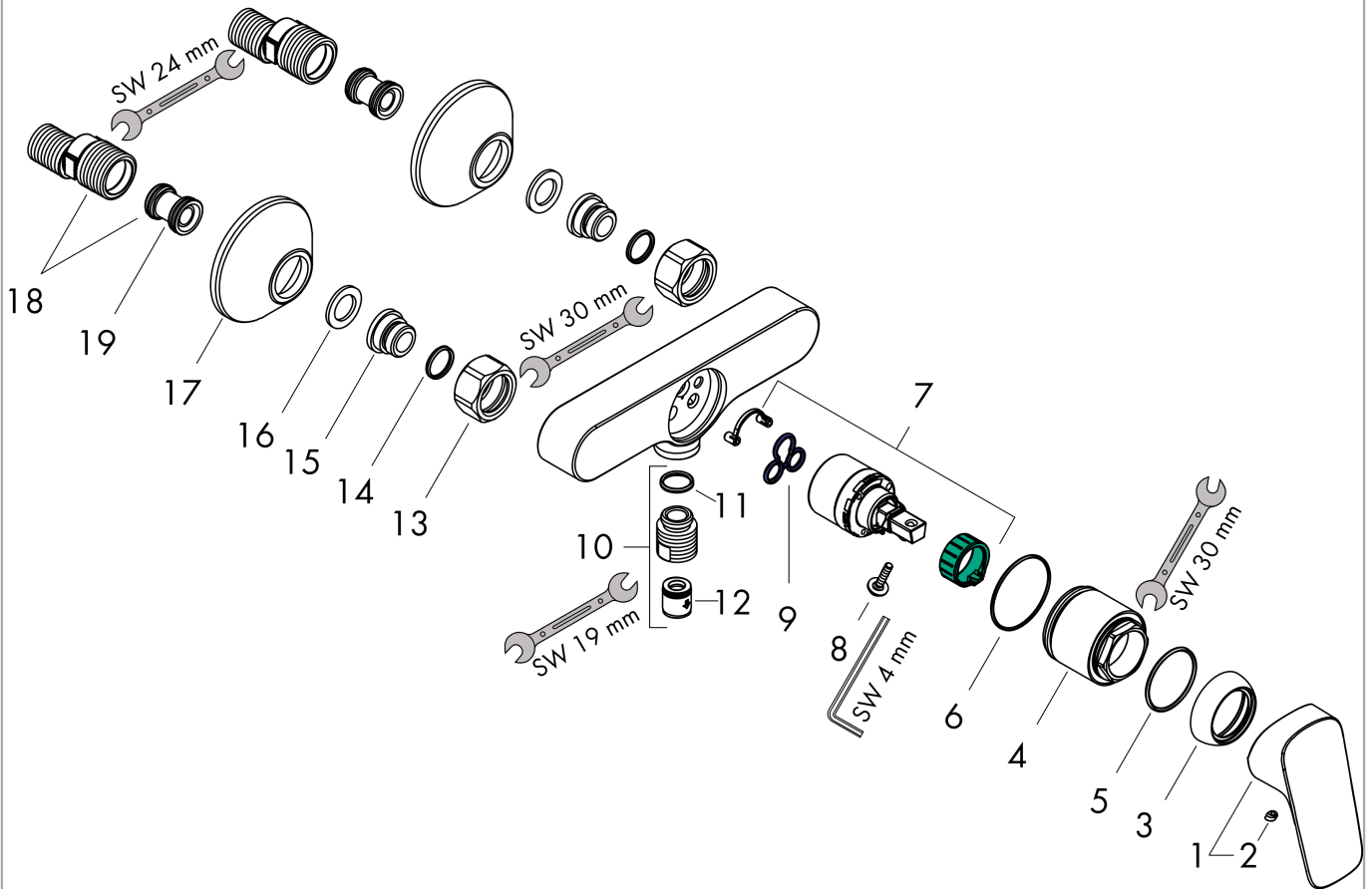


**Logis**  
**Single lever shower mixer for exposed installation**  
 Finish: **Chrome** Article Number: **71600000**



**Exploded Drawing**

Year of production: >07/14



## Logis

### Single lever shower mixer for exposed installation

Finish: **Chrome** Article Number: **71600000**



## Spare part list

Year of production: >07/14

Pos.	Description	Article Number	PC	PU
1	handle	92224000	10	1
2	screw cover	96338000	1	1
3	flange	97406000	6	1
4	nut	97977000	9	1
5	O-Ring 32x2	98193000	1	1
6	O-ring 33x1,5	98164000	1	1
7	cartridge, assy	92730000	11	1
8	locking screw for handle	95140000	2	1
9	seal	95008000	3	1
10	Hose Connection	96044000	7	1
11	O-ring 14x2	98129000	1	1
12	set of non return valves DW 15	94074000	5	1
13	set of nuts	96157000	8	1
14	O-ring 15x2	98163000	1	1
15	connecting thread	97220000	5	1
16	filter packing	96922000	3	1
17	escutcheon Ø 70 mm	94135000	4	1
18	set of S-unions (±12 mm)	94140000	10	1
19	noise reduction	96429000	2	1
a	set of S-unions (±32 mm)	98592000	9	1