

Tender specification:

Oventrop manual radiator valves "HR".

Body made of nickel plated brass. Lengths according to DIN 3842. Stem with double O-ring seal.

Connection for threaded and copper pipes as well as Oventrop composition pipe "Copipe" (direct connection only possible for size DN 15).

Plastic pipes and the composition pipe "Copipe" can be connected with the help of nipples and compression fittings for male threads.

Technical data:

Operating temperature t_s : 2 °C up to 120 °C
(for short periods up to 130 °C)

Max. operating pressure p_s : 10 bar (PN 10)

Low pressure steam 0.5 bar, 110 °C

Function:

Oventrop manual radiator valves "HR" allow for a precise manual room temperature control. The radiator heat output is proportional to the setting of the handwheel. A special profile valve disc permits a precise flow regulation.

Advantages:

- Oventrop manual radiator valves allow for a precise manual room temperature control
- easy to use
- double stem seal
- economical model
- two different types of handwheel available

Application:

Central heating and cooling systems with closed circuits for operation with non-aggressive, harmless fluids (e.g. water or suitable water and glycol mixtures (max. glycol proportion 50 %) according to VDI 2035/ÖRNORM 5195) and steam 0.5 bar, 110 °C.

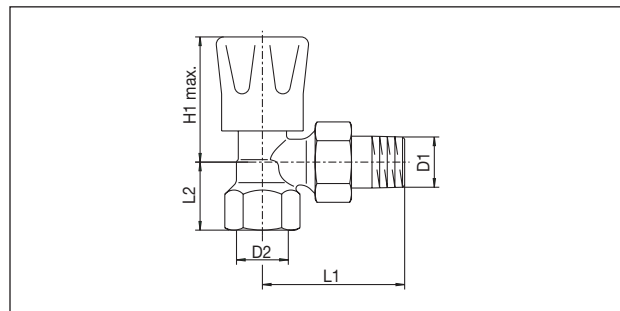
Standard connection for threaded pipes but Oventrop offers suitable connection elements for the connection of standard copper, stainless steel, precision steel and plastic pipes. When using compression fittings, the Oventrop "Ofix" compression fittings have to be used. The Oventrop composition pipe "Copipe" is connected by use of the compression fittings "Cofit S" or the press fittings "Cofit P".

Model:

Body made of nickel plated brass. Lengths according to DIN 3842. Inner parts and coupling made of brass. Stem with double O-ring seal made of EPDM. Handwheel made of heat-proof and impact resistant plastic.

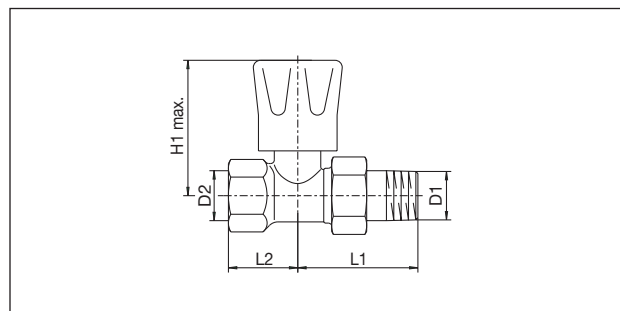


Manual radiator valves "HR"



DN	D ₁ EN 10226-1	D ₂ EN 10226-1	L ₁	L ₂	H _{1max.}	H _{2max.}	Item no.
10	R 3/8	Rp 3/8	51.5	22.5	49	-	1190503
15	R 1/2	Rp 1/2	57.5	27.5	50.5	-	1190504
20	R 3/4	Rp 3/4	65.5	29	53	-	1190506

Dimensions angle pattern valve



DN	D ₁ EN 10226-1	D ₂ EN 10226-1	L ₁	L ₂	H _{1max.}	H _{2max.}	Item no.
10	R 3/8	Rp 3/8	51	23.5	56.5	-	1190603
15	R 1/2	Rp 1/2	50.5	29	56.5	-	1190604
20	R 3/4	Rp 3/4	61.5	29	53	-	1190606

Dimensions straight pattern valve

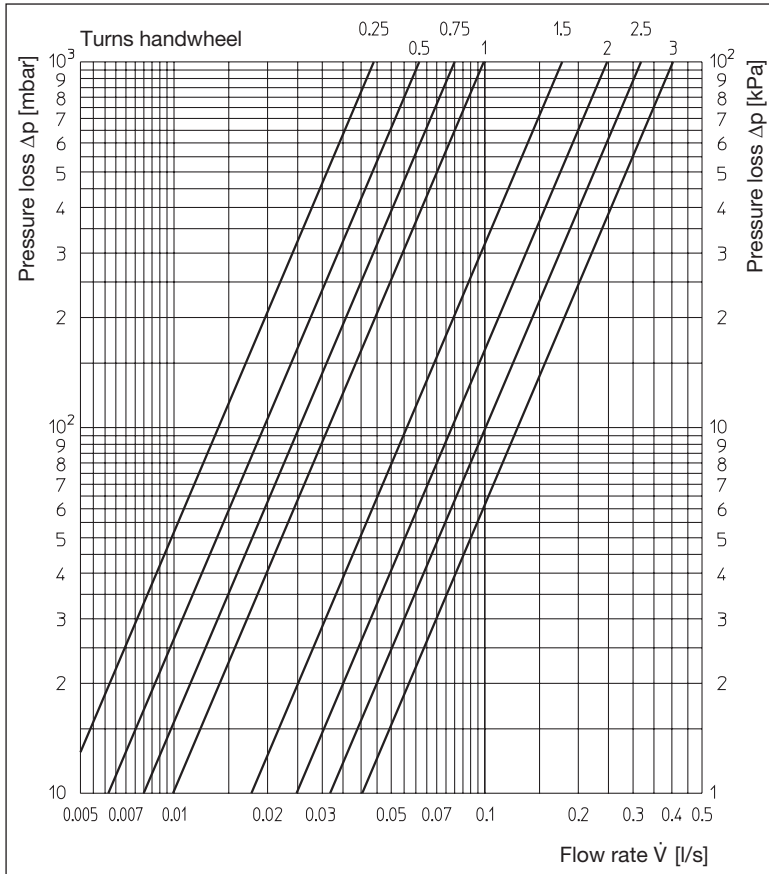


Chart: DN 10 - DN 20 Angle pattern valve

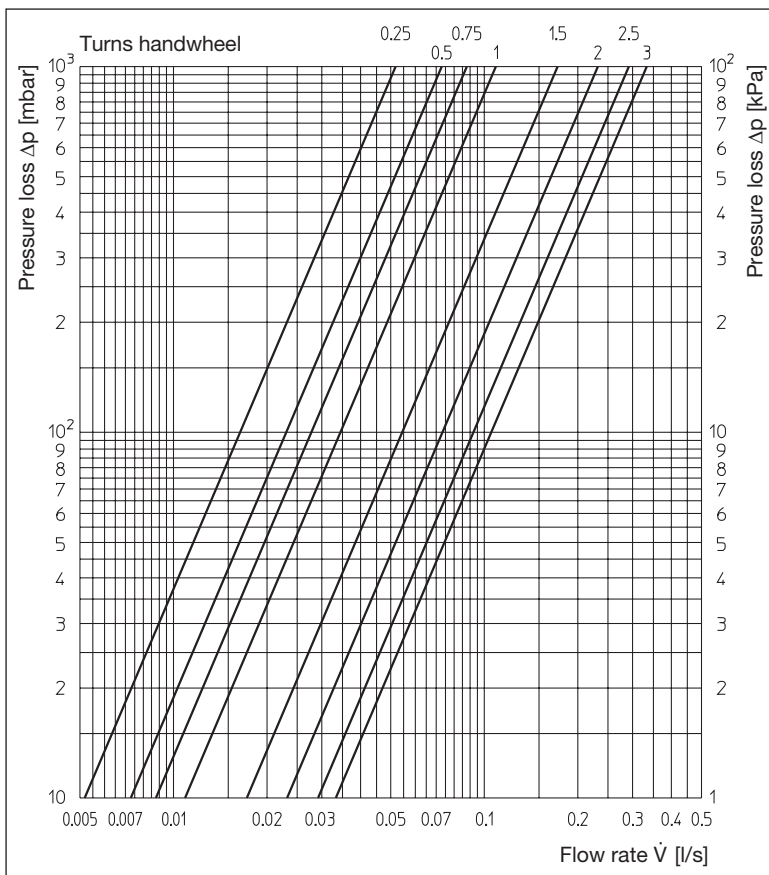


Chart: DN 10 - DN 20 Straight pattern valve

Subject to technical modifications without notice.

Product range 1
 ti 39-DE/10/MW
 Edition 2018